

éste situado cerca del Volcán de Chiriquí (7090 pies de altura) y en donde se siente bastante frío.

El Ferrocarril recorre los principales lugares de la parte occidental de la Provincia, desde Pedregal a David y al Boquete, con ramales hacia La Concepción y Dolega.

Esta Provincia ofrece innumerables atractivos al visitante. El que la visita se siente encantado y es seguro que vuelva allí en poco tiempo. Actualmente está en estudio la conveniencia de establecer una colonia de vera-

is to be found, each carrying on their worship in accordance with the tenets of their order and without interference from the authorities or the public.

Of course, the Catholic religion predominates, as it is almost exclusively the faith of the people of the country; but religious tolerance is excellently practiced outside the temples' walls.

### THE GULF OF PANAMA

In the Gulf of Panama, the principal gulf of the Republic and situated on the Pacific side of the Isthmus, the United States Fleet will



Pintoresco paisaje en el interior de la República.

Panoramic view of one of the beauty spots of the Interior of the Republic of Panama.

neo en esa Provincia para los vecinos de la Zona del Canal. Anteriormente la mayoría de los empleados del Canal iban a veranear a Cartago; pero hoy prefieren al Boquete, que tiene mejor clima y atractivos inefables.

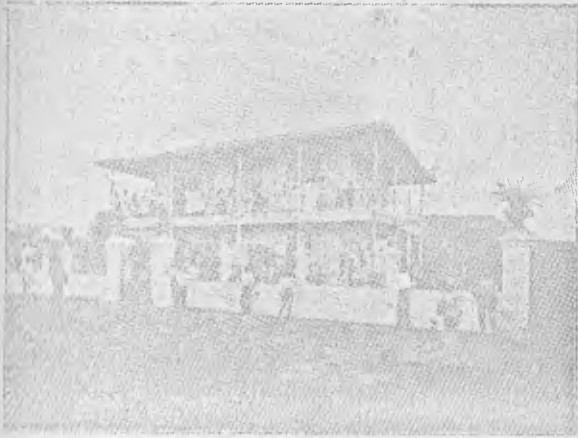
### OTROS LUGARES IMPORTANTES DEL INTERIOR.

La Provincia de Bocas del Toro, en donde la United Fruit Co. tiene sus extensas plantaciones de bananos, es de mucho porvenir. Actualmente se contempla el proyecto de construcción de un camino que la una con la Provincia de Chiriquí, con lo cual ambas provincias progresarán de manera asombrosa.

engage in maneuvers during the month of March.

The Atlantic and Pacific fleets will meet here on February 19 and early in March will begin their maneuvers which according to present plans includes mock attacks on the coastal fortifications erected for the defense of the Panama Canal and on which are mounted some of the biggest guns of American ordnance. Latest reports assert that Secretary of the Navy Denby and the Senate and House Naval Committees will be present during these maneuvers. The fortified Islands and the Canal entrance are in plain sight of the city.

Eight miles from the city of Panama lies the enchanting Island of Taboga, famous for its scenery, bathing beaches and salubrious climate and excellent facilities for fishing. The Hotel Asplirwall operated by an American,



Casa de campo en Chorrcha, David, Chiriquí.  
Country house, Chorrcha, David, Chiriquí.

La región indígena de San Blas, en la Provincia de Colón, está actualmente despertando al progreso. Es ese un lugar ideal para colonias agrícolas, y recientemente el Gobierno ha celebrado un contrato para el establecimiento de la primera. Aparte de esto es un precioso lugar de paseo y en él se contemplan muy bellos panoramas.

El Valle de Antón en la Provincia de Coclé, de clima saludable, en donde probablemente el Gobierno construirá un Sanatorio, después de la construcción del camino que lo unirá con la Capital de la República.

Natá, en la misma Provincia, con su histórica catedral que ha contemplado el desfile de cuatrocientos años.

La Chorrera, en la Provincia de Panamá, con su hermoso Salto del Río Caimito.

La Provincia de Veraguas con sus muy conocidos baños de salud y en donde entre otros variados productos se fabrican hamacas de primera calidad.

Las Provincias de Herrera y de Los Santos en las que actualmente se construyen magníficas carreteras que le darán poderoso impulso a su progreso.

Una visita a cualquiera de estos lugares convencerá al viajero de la belleza de la tierra panameña y de su riqueza incalculable.

offers excellent accommodations. Besides the Aspinwall, there are other Hotels on the Island which also offer good accommodations and meals.

At the Pearl Islands group, easily accessible from the city of Panama, and excellent for excursions, besides the excellent facilities for swimming etc., some of the best pearls in the world can be bought there from native divers at very cheap prices.

### BUSINESS OPPORTUNITIES

The cities of Panama and Colon, owing to their excellent geographic situation, offer exceptional opportunities for undertaking commercial enterprises. In both cities Chambers of Commerce have been established and are at ready all times to provide such information as maybe required by parties interested in the commercial possibilities offered.

Everything offered for sale here finds a ready market. There are many Chinese silk stores doing business here and carrying in stock Chinese, Japanese and East Indian curios, which, as a result of the low tariff, are offered at prices far below those which prevail in the United States.

"Souvenir" stores are also plentiful and carry a varied line of stock comprising native made curiosities, Panama Hats, Post Cards, etc.

The city of Panama boasts ten first class photographic studios and films and camera supplies for the amateur photographer can be obtained fresh at any time and any place. In fact, the traveller to the Isthmus, say for instance, from the United States, will not miss anything, except perhaps, the biting cold of the northern winters and the excessive heat of northern mid-summer.

Besides our excellent postal facilities, people on the Isthmus are kept in daily touch with the outside world by daily Cable service furnished by the Associated Press to the Star & Herald and published every morning in the year, in English and Spanish. This service is brought to the Isthmus by the All America Cables Inc. with its main station in Balboa, Canal Zone and a branch office in Panama City.



Peru and Ecuador, where thoroughbreds racing is regularly carried on to contest for the big Purses to be offered.

Besides these points where the visitor can find diversion, there are many social centers among the native and foreign elements where the traveller always finds a welcome, including the Union Club, the place of meeting Panama's elite.

This universally known social center is completely outfitted with the latest improvements to satisfactorily meet the demands of the most fastidious. It is housed in its own modern concrete building erected on the water front thus affording a magnificent view of the Bay of Panama and the fortified Islands at the entrance of the Panama Canal and possesses a commodious dancing pavilion and banqueting hall, an excellently appointed dining room, a well stocked bar, library, poolroom, etc.

### OUR FUTURE PROSPECTS.

There is no doubt but that Panama is a country possessed of a brilliant future. In this all persons visiting us agree. Fertile and undeveloped lands are found everywhere filled with riches yet to be exploited with the help of capital. The Government has already taken the initiative in the opening up of the country by undertaking an extensive road building program, convinced that on the agricultural development of the country must be laid the basis of the nation's progress.

We must not lose sight of the fact that the Republic has attained its position in the world today during the past twenty years of independent life and naturally in many cases has paid the price of experience; but with the experience gained during this period it must be expected that the nation will now advance along the highway of progress and prosperity with gigantic strides and that soon we will see the realization of the expectations of our foreign friends and the golden dreams we cherish; the conversion of our nation into an emporium of the universe.

It is because of the conviction that this era of progress and prosperity for the Isthmus is near that our Legislators have begun to consider a closer cooperation with the Government to the happy conclusion of the road building

program now underway; that the intensive development of the yearly tourist traffic is receiving serious attention both from the Government and the business associations here established; that greater and more extensive publicity is being given the Isthmus and its business possibilities for the purpose of attracting foreign investors.

It is hardly possible to doubt that once foreign capital is fully convinced of the business possibilities awaiting development here and realizes the full protection accorded investors by our laws, they will cooperate with us in our work of developing the nation's resources fully assured that they will reap abundant returns, from the money they invest.

### THE PROVINCE OF CHIRIQUI.

At the other extreme of the Republic of Panama forming our boundary with the Republic of Costa Rica, lies the Province of Chiriqui.

The capital and this province are linked up by the steamers of the National Navigation Company, whose boats, making from nine to ten knots an hour, cover the distance within 48 hours.

The principal port of the Province of Chiriqui, is Pedregal, about four and a half miles distant from the City of David, the capital of the Province. The port of Pedregal and the City of David are connected by the first railroad undertaken by the National Government. The road does not end in the City of David but runs far into the interior, tapping one of the Republic's most fertile regions.

The Province of Chiriqui is the most prosperous in the Republic and is perhaps the richest of all in the cattle raising industry. Its plains are extensive and the temperature generally mild and agreeable.

Within a short distance of the City of David is the town of Boquete, high up among the hills where several American planters are engaged in the production of coffee and cacao. Both these products are raised in considerable quantities and the quality of the Boquete Cacao is considered superior to any produced in Central America and a higher price is paid for it in the London Market.

The Andes mountains in this province attain the highest altitude of any point on the Isthmus. We have the mountains of Cerro de la Horqueta with an altitude of 2,000 meters approximately 6,000 feet and Cerro Picacho with an altitude of 2,110 meters. Ballazar, Santa Maria, Verro Viejo, Chorea and Hornitos are other high peaks in this province.

The extension of the plains or prairies of David, Alanje and San Felix is immense, and the soil wonderfully fertile and productive.

This province has an extensive sea coast and is traversed by several important rivers, chief among them being the Tabasare, Fonseca, David, Rio Chico, Guanabana and Golfito, all emptying into the Pacific.

The Province of Chiriqui can rightly be termed 'one of Nature's privileged places' possessing as it does all kinds of soil and producing all kinds of timber. It is the only place in the Republic where plants of the temperate zone will grow, strawberries and other Northern plants fruiting abundantly there.

Its climate is most agreeable and healthy. After the tropical heat of the coast, the temperature becomes cooler as one approaches the plains of Potrerillos and the mountains of Boquete. So good has the climate been found that the Canal Zone authorities are at present considering the establishment in that region of a vacation camp where American employes may sojourn on short vacations instead of having to accumulate vacation time for two and even three years before finding it possible to take vacations in the States.

#### IMPORTANT POINTS OF INTEREST IN PANAMA.

The province of Bocas del Toro, where the United Fruit Company has extensive banana plantations has a promising future. At present the construction of a road uniting it with the province of Chiriqui is under consideration. With this road the progress of these two provinces will be surprisingly rapid.

The unexplored region of San Blas, inhabited by Indians and situated in the Province of Colon is at present awakening to the advantages of progress. It is an ideal

place for the establishment of agricultural colonies and very recently the Government entered into a contract for the establishment of a colony there. Besides this, it is an ideal place for recreational outings owing to the beautiful panoramas in evidence everywhere.

The valley of Anton, in the Province of Coele, is another of the Republic's beauty spots and boasts an excellent climate and is extremely fertile and salubrious. The Government is at present contemplating the construction of a first class modern highway between the Capital City and this region where it also plans to erect a modern sanatorium among the beautiful hills.

The town of Nata, in the same province, is full of historic interest and boasts a cathedral 400 years old.

La Chorrera, in the Province of Panama and easily accessible in automobile from the City of Panama once passage across the Canal is secured, is a quaint little town and boasts a very pretty waterfall which besides its merits as a beauty spot could also be harnessed to supply motive power for the development of industries in the neighborhood. The panoramic views which obtain along the route between Panama city and this place are superb.

Beauty spots abound in the Province of Veraguas which also boasts some very good thermal baths, especially in the region of Calobre, and which are visited every year by a large number of persons seeking the benefits of the health giving properties of their waters. In this province also are manufactured some beautiful hammocks, hats and other articles of straw the handiwork of the Indians. A modern system of roads is being constructed in this province, connecting the hinterland with the ports.

The Province of Herrera, will soon be available for the investment of foreign capital as a result of the extensive road construction program underway there and rapidly nearing completion and which will without doubt greatly contribute towards the development on a vast scale of agriculture for which this region is admirably suited.

These are only a few superficial notes of the natural beauty spots which abound throughout the country and which prove nature's readiness to bounteously repay those who visit the Isthmus for recreation or for business.



# Notas Hípicas

## Club Hípico de Panamá

### HIPODROMO "JUAN FRANCO"

Presidente, Don RAUL ESPINOSA; Vicepresidente, General Don NICANOR A. DE OBARRIO;  
Tesorero, Don TOMAS GABRIEL DUQUE; Secretario, Don ENRIQUE DE LA GUARDIA.

#### TEMPORADA ESPECIAL DE CARNAVALES

Organización para los once espectáculos de la Temporada Especial de Carnavales.

CLASE	No. DE CARRERAS	PREMIOS
Nacionales "Marden"	12	990 dollars
Nacionales ganadores	11	1,475 "
Sangre pura "A"	21	15,450 "
Sangre pura "B"	17	3,250 "
Jockey Club	11	1,335 "
		22,500 dollars

## Panama Jockey Club

### JUAN FRANCO RACETRACK

President, Mr. RAUL ESPINOSA; Vice-President, General NICANOR A. DE OBARRIO;  
Treasurer, Mr. TOMAS GABRIEL DUQUE; Secretary, ENRIQUE DE LA GUARDIA.

#### SPECIAL CARNIVAL SEASON

The organization of the eleven events of the Special Carnival Season.

CLASS	RACE No.	PURSE
Native Maiden Ponies	12	\$ 990.00
Native Ponies, Winners	11	1,475.00
Thoroughbreds "A"	21	15,450.00
Thoroughbreds "B"	17	3,250.00
Jockey Club	11	1,335.00
		\$ 22,500.00